

INSTRUCTION FOR BACK-MOUNTING RACETECH 119 SEATS TO ROLLAGE/CHASSIS

This instruction refers to the following Racetech seat models:

119 Series (RT4119HRW, RT4119THR, RT4119WTHR, RT9119HR, RT9119THR, RT9119WTHR)

Fit the seat into the vehicle using the side-mount brackets and adjust to the approximate position of the driver's preference. Drivers are encouraged to trial this seat position at testing and/or track-days and adjust as required. Once the seat position is confirmed, measurements can be taken for fabrication of the back bracket. The drawings below are examples of how a fabricated bracket assembly can be used in a number of configurations to fit to the rollage tube at the correct height. Racetech advises the use of 5mm 5083 aluminium plate for fabrication. Alternatively, Racetech offers the **RTB1006B** (possible use shown in example configurations A and B) or for a 'bolt-on' option, the **RTB2005B** with (or without) a pair of **RTB2005C** clamps (example configurations C and D).

Note: For seats to meet the FIA 8855-1999 standard, there is no requirement to use an approved back-mounting bracket. Drivers/teams may fabricate a bracket, using appropriate engineering consideration, to suit the rollage tubing of the vehicle (options not limited to the examples below).

ADVISED FITTING AND FABRICATION DETAILS

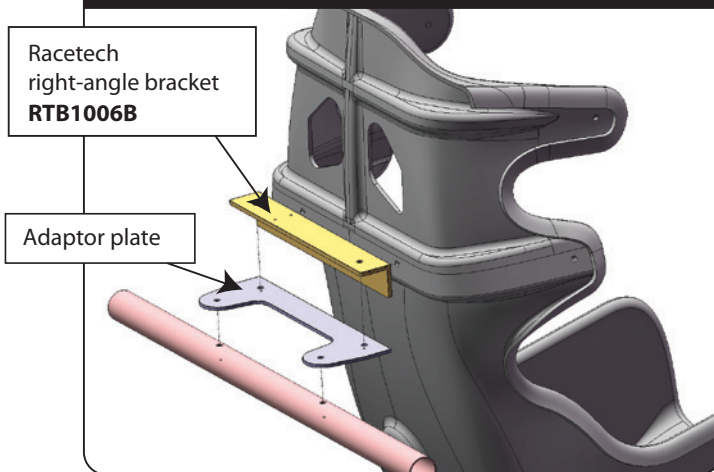
Right-angle bracket to seat - M8 (12.9) cap screws and 22 x 3mm washers required.

Right-angle bracket to adaptor plate (if used) - two M8 bolts, nuts and washers required.

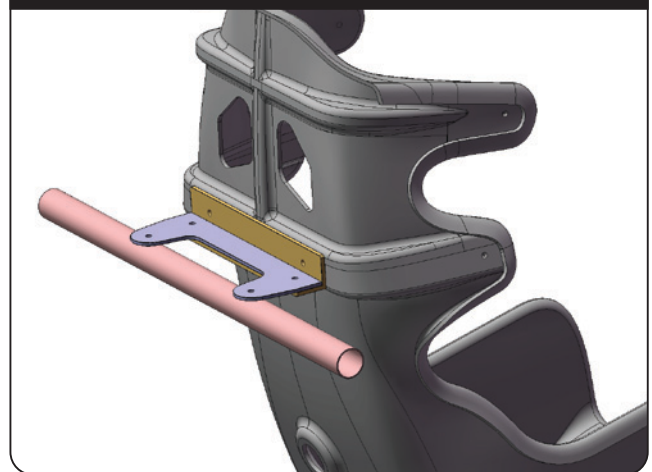
Adaptor plate/bracket to chassis - two M8 bolts and washers required.

Adaptor plate - 5mm Aluminium (5083) recommended for fabrication.

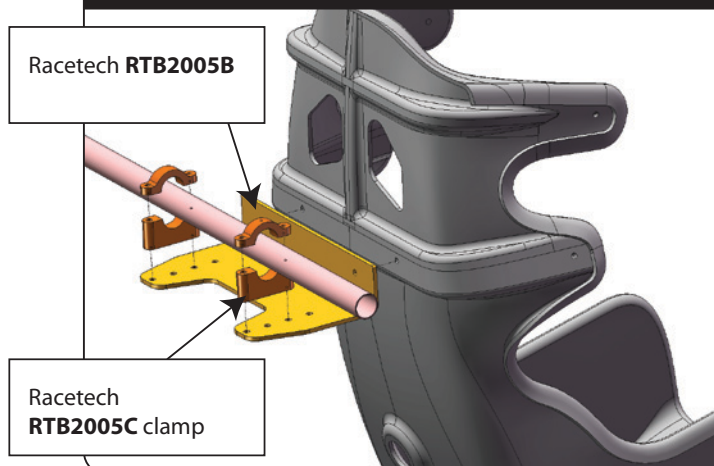
EXAMPLE CONFIGURATION - A
(EXPLODED VIEW)



EXAMPLE CONFIGURATION - B



EXAMPLE CONFIGURATION - C
(EXPLODED VIEW)



EXAMPLE CONFIGURATION - D

